

Pembroke Open Space Plan

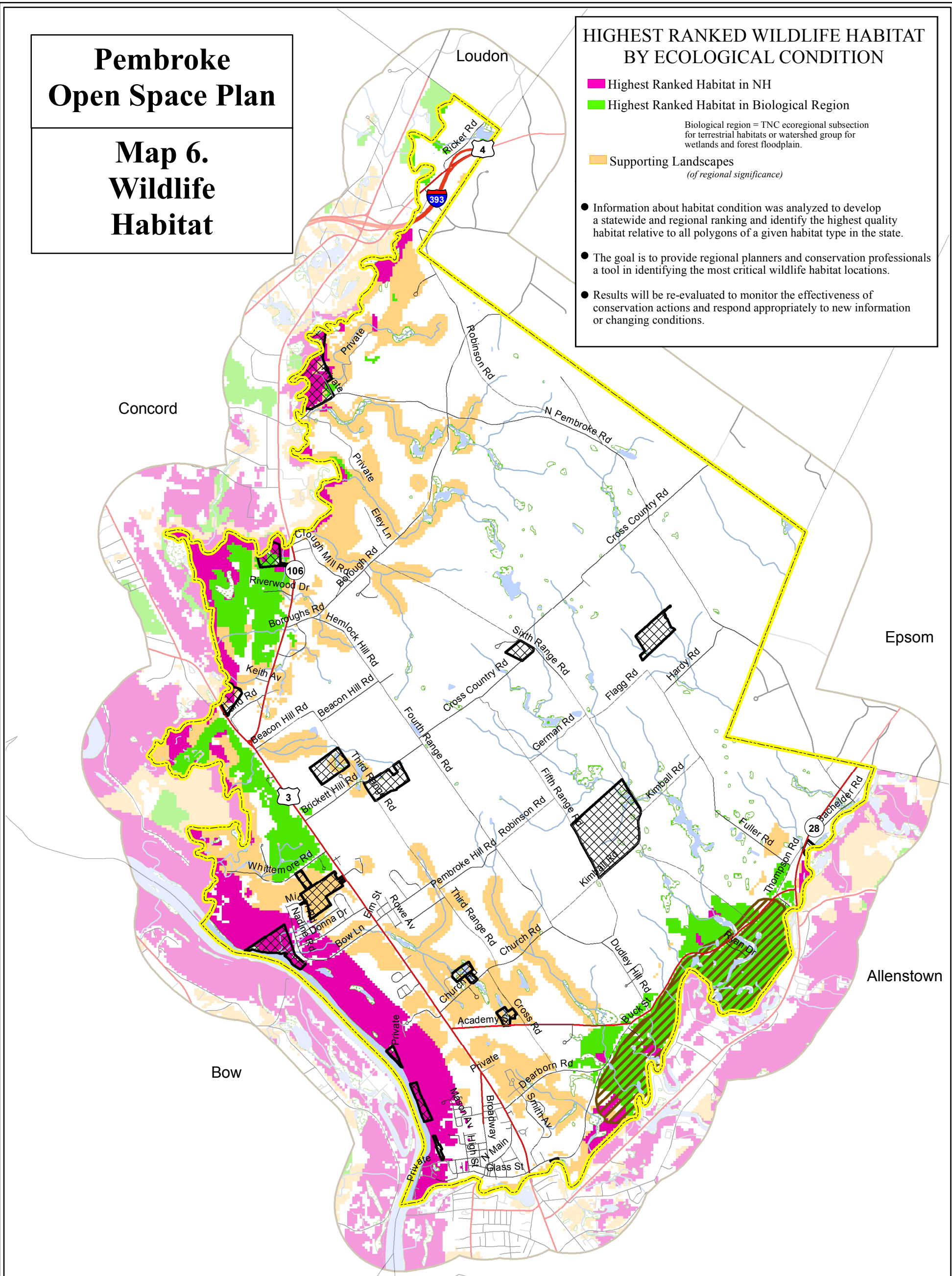
Map 6. Wildlife Habitat

HIGHEST RANKED WILDLIFE HABITAT BY ECOLOGICAL CONDITION

- Highest Ranked Habitat in NH
- Highest Ranked Habitat in Biological Region
- Supporting Landscapes
(of regional significance)

Biological region = TNC ecoregional subsection for terrestrial habitats or watershed group for wetlands and forest floodplain.

- Information about habitat condition was analyzed to develop a statewide and regional ranking and identify the highest quality habitat relative to all polygons of a given habitat type in the state.
- The goal is to provide regional planners and conservation professionals a tool in identifying the most critical wildlife habitat locations.
- Results will be re-evaluated to monitor the effectiveness of conservation actions and respond appropriately to new information or changing conditions.



Legend

- Pembroke Town Boundary
- Roads**
- Interstates
- Class I, II, IV State Highways
- Class V Town Maintained Roads
- Class VI Unmaintained Roads
- Other (private roads, trails, etc.)
- Lands Under Conservation
- Wetlands

- Lakes and Ponds
- Rivers and Streams

- Migratory Bird Area

Wildlife Action Plan 2005

- Habitat Rank**
- Highest ranked habitat in NH (by condition)
- Highest ranked habitat in biological region
- Supporting landscapes

Source Data: 1:24,000 source scale data from NH GRANIT, NH Department of Transportation, and Pembroke Open Space Committee. This map was created in July 2010 by CNHRPC for the Town of Pembroke. It is intended for planning purposes only, not for site specific or regulatory determinations. Corrections should be directed to CNHRPC.



0 0.25 0.5 1 Mile



Central New Hampshire Regional Planning Commission
28 Commercial Street
Concord, NH 03301
603.226.6020
www.cnhrpc.org

