

# Pembroke Open Space Plan

## Map 5. Agricultural Soils

### Important Agricultural Soils Definitions

#### Prime Farmland:

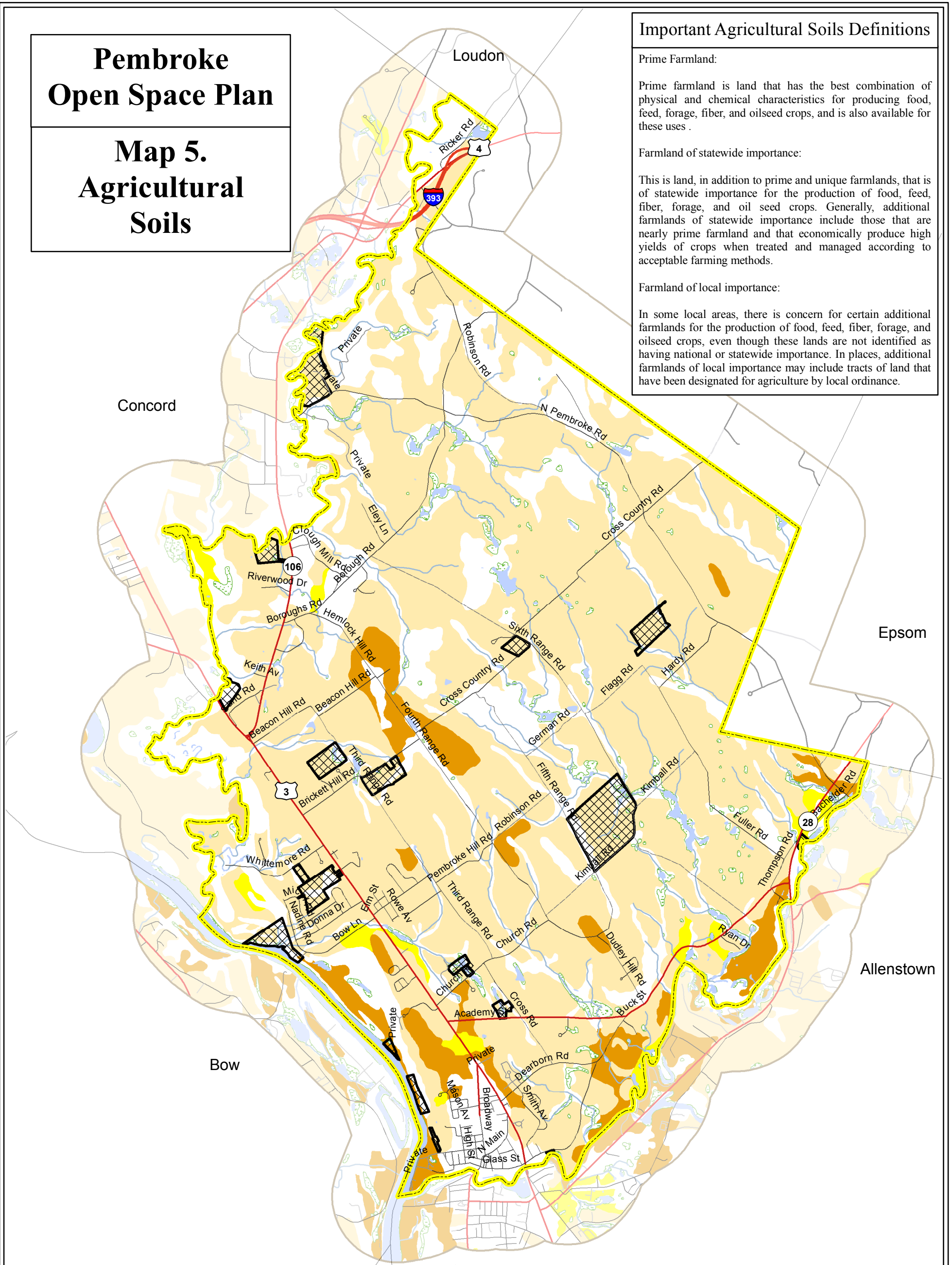
Prime farmland is land that has the best combination of physical and chemical characteristics for producing food, feed, forage, fiber, and oilseed crops, and is also available for these uses.

#### Farmland of statewide importance:

This is land, in addition to prime and unique farmlands, that is of statewide importance for the production of food, feed, fiber, forage, and oil seed crops. Generally, additional farmlands of statewide importance include those that are nearly prime farmland and that economically produce high yields of crops when treated and managed according to acceptable farming methods.

#### Farmland of local importance:

In some local areas, there is concern for certain additional farmlands for the production of food, feed, fiber, forage, and oilseed crops, even though these lands are not identified as having national or statewide importance. In places, additional farmlands of local importance may include tracts of land that have been designated for agriculture by local ordinance.



### Legend

Pembroke Town Boundary

#### Roads

Interstates

Class I, II, IV State Highways

Class V Town Maintained Roads

Class VI Unmaintained Roads

Other (private roads, trails, etc.)

Lands Under Conservation

Lakes and Ponds

Rivers and Streams

Wetlands

#### Important Agricultural Soils

##### Farmland Classification

Prime farmland soils

Farmland of statewide importance

Farmland of local importance

Source Data: 1:24,000 source scale data from NH GRANIT, NH Department of Transportation, and Town of Pembroke. This map was created in July 2010 by CNHRPC for the Town of Pembroke. It is intended for planning purposes only, not for site specific or regulatory determinations. Corrections should be directed to CNHRPC.



0 0.3 0.6 1.2  
Mile



Central New Hampshire  
Regional Planning Commission  
28 Commercial Street  
Concord, NH 03301  
603.226.6020  
www.cnhrpc.org

