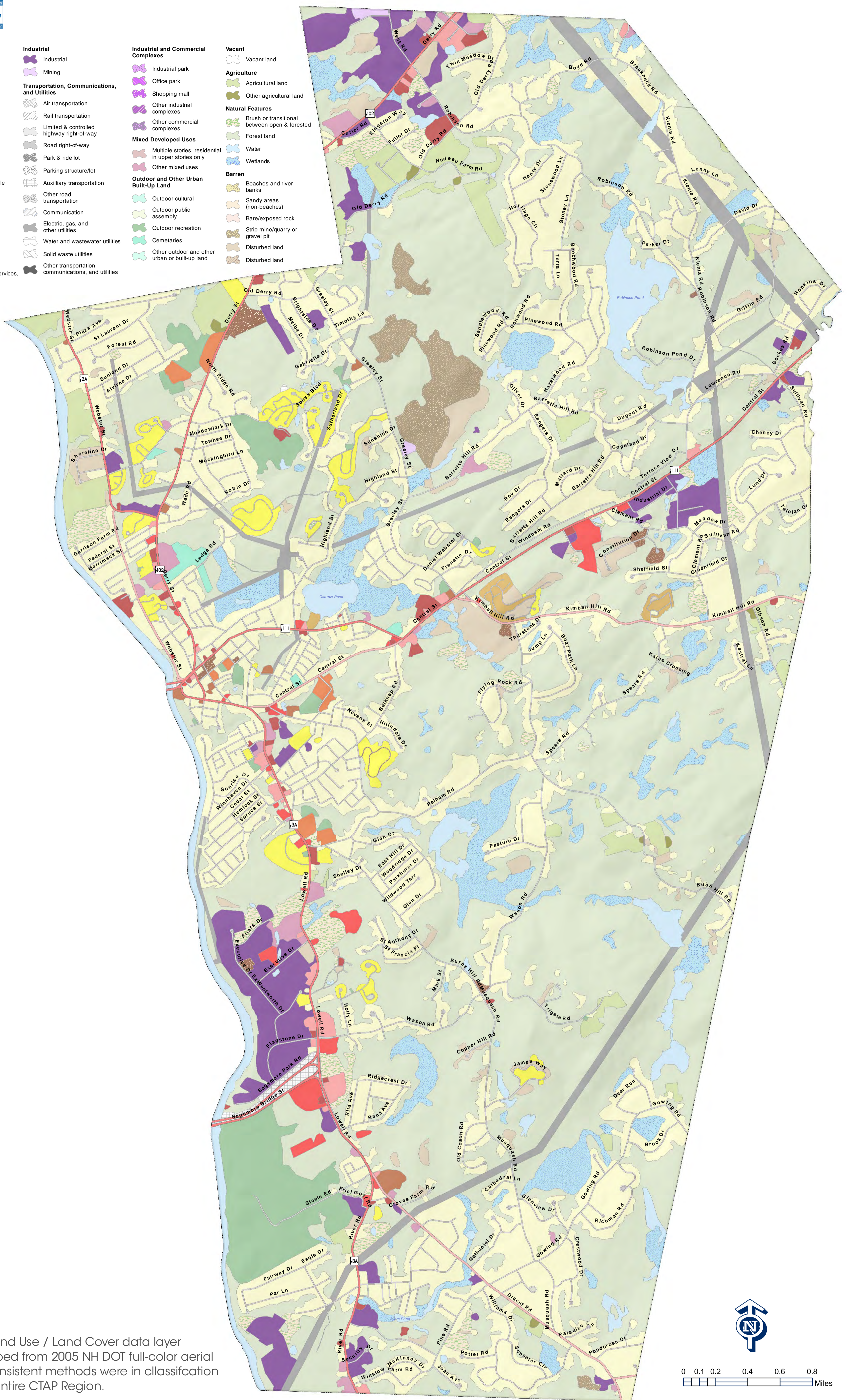


- | | | | |
|--|--|--|--|
| Residential
Multi-family (4 or more stories)
Multi-family (1-3 stories)
Single family/duplex
Mobile home parks
Group and transient quarters
Other residential
Commercial, Services, and Institutional
Commercial retail
Commercial wholesale
Services
Lodging
Government
Institutional
Educational
Indoor cultural/public assembly
Other commercial, services, and institutional | Industrial
Industrial
Mining
Transportation, Communications, and Utilities
Air transportation
Rail transportation
Limited & controlled highway right-of-way
Road right-of-way
Park & ride lot
Parking structure/lot
Auxiliary transportation
Other road transportation
Communication
Electric, gas, and other utilities
Water and wastewater utilities
Solid waste utilities
Other transportation, communications, and utilities | Industrial and Commercial Complexes
Industrial park
Office park
Shopping mall
Other industrial complexes
Other commercial complexes
Mixed Developed Uses
Multiple stories, residential in upper stories only
Other mixed uses
Outdoor and Other Urban Built-Up Land
Outdoor cultural
Outdoor public assembly
Outdoor recreation
Cemeteries
Other outdoor and other urban or built-up land | Vacant
Vacant land
Agriculture
Agricultural land
Other agricultural land
Brush or transitional between open & forested
Forest land
Water
Wetlands
Barren
Beaches and river banks
Sandy areas (non-beaches)
Bare/exposed rock
Strip mine/quarry or gravel pit
Disturbed land
Disturbed land |
|--|--|--|--|



The CTAP Land Use / Land Cover data layer was developed from 2005 NH DOT full-color aerial images. Consistent methods were in classification across the entire CTAP Region.

CTAP Land Use / Land Cover - Town of Hudson, NH

November 2008

Prepared by NRPC GIS
 Project Location: J:\GIS\Projects2007\CTAP\Intro_maps\Hudson_Landuse_intro.mxd

Maps prepared by the Nashua Regional Planning Commission are for planning purposes only. NRPC uses data gathered from multiple sources at various scales of accuracy. No warranties, expressed or implied, are provided for the data herein, its use, or its interpretation.